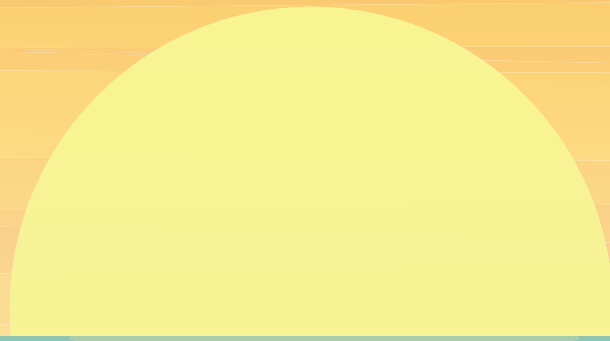


2022/2023 **ANNUAL REPORT**



Kenosha County:

The premier destination for
new investment and talent in the
Chicago-Milwaukee corridor.

DEAR INVESTORS, PARTNERS, & STAKEHOLDERS,

On behalf of KABA's Board and staff, I am pleased to share the Kenosha Area Business Alliance's Annual Report for 2022.

It's a new era for KABA. As I write this, a newly formed search committee is working with a consultant on a nationwide search for a new leader for the organization. Our former president Todd Battle, after 19 years of outstanding leadership, has moved on - taking a new position in the private sector. Todd coordinated many major impactful economic development projects during his time at KABA including Uline, Haribo, Nexus Pharmaceuticals, and Amazon. He also developed relationships with key stakeholders and served on many area boards, including the Kenosha Unified School District. KABA and its partners are incredibly grateful for his countless contributions to both KABA and Kenosha County. Todd has taken KABA to the next level and positioned both the organization and our community for great things.

I additionally would like to mention the great loss of Heather Wessling who has also moved on from KABA. In her position at Vice President, Heather met with and helped hundreds of companies. She was involved in many community development initiatives, working with KABA's partners to move Kenosha County forward. Some of those include the Salem Business Park, the Kenosha Innovation Neighborhood, the Kenosha County Food Bank, the Kenosha County Transit Planning Advisory Committee, and redevelopment efforts to rebuild portions of the Uptown neighborhood heavily damaged in 2020.

As they say, the only constant is change and the KABA Board and staff are feeling very positive about new beginnings. We are excited to build upon the good work that Todd and Heather have done. In place is a very capable and experienced staff, an engaged board of business and community leaders, and countless community partners who all believe in KABA's vision that Kenosha County is the premier destination for new investment and talent in the Chicago-Milwaukee corridor.

The report that follows highlights economic development efforts and outcomes in 2022, summarizes KABA's performance, and recognizes key actors that are contributing to Kenosha County's success.

On behalf of our board and employees, we thank you for your trust in KABA and look forward to your continued support, investment and involvement in the years ahead.

Best wishes to you for a healthy and prosperous 2023.

Sincerely,

JENS

Jens Emerson, Chair, Board of Directors



LEADERSHIP

KABA is governed by a 30-member board of directors and a 12-member executive committee. Board members are nominated by a committee and elected by KABA's members. In addition to the board of directors, a number of committees are active in various aspects of the organization including finance, audit, and personnel. KABA's Board and Committee listing reflects composition as of April 25, 2023.

BOARD OF DIRECTORS



CHAIR
Jens Emerson
VP Finance,
Froedtert South



VICE CHAIR
Wes Saber
Executive VP
& CFO,
Haribo of
America, Inc.



SECRETARY
Chris Weyker
CEO, KAC

PICTURE
NOT
AVAILABLE



TREASURER
Anne Arbas
Executive VP
& CFO,
Jockey
International

**IMMEDIATE
PAST CHAIR**
Dr. John Swallow
President & CEO,
Carthage College

Aman Ahmed
Director of
Government Relations
& International Sales,
Nexus Pharmaceuticals

Sue Block
VP - Finance, Uline

Joel Burow
Manager, Customer
Solutions,
WEC Energy Group

Tamarra Coleman
Executive Director,
Shalom Center

Mike Deney
President & CEO,
State Banks of the
Lakes

Joshua Ferguson
Owner,
PlaySpace Kenosha

Dr. Deborah Ford
Chancellor,
University of
Wisconsin-Parkside

Jamie Hogan
President, Specialized
Accounting Services

Donna Jamieson
President,
Aurora Medical Center
- Kenosha

Anthony Jefferson, Sr.
Owner, Five-Star
Moving Crew

A.J. Kegg
President, Horizon
Systems Machining

Tom King
VP of Supply Chain,
InSinkErator

Christie Lawson
General Manager,
Industrial Business,
MTI - A Steel
Partners Co.

Tom Moore
Senior VP, Senior
Commercial Banking
Manager, Johnson
Financial Group

Chad Navis
Vice President, Zilber
Property Group

Aldo Pagliari
Senior VP - Finance
& CFO, Snap-on
Incorporated

Mike Pitts, Jr.
Owner, Pitts Brothers
& Associates

Matt Prince
CEO, Riley
Construction Company

Dr. Ritu Raju
President/CEO,
Gateway Technical
College

Ayesha Ahmed
Dr. Bryan Albrecht
Varun Chaudhary

Corey Schultz
VP of Sales &
Marketing,
Five Star Fabricating

Charles Skendziel
Owner, Equity Creative

Maureen Sorensen
VP - Operations, RPM
International, Inc. -
Specialty Coatings
Group

Mike Thompson
President & CEO,
Fair Oaks Foods

Wayne Wehking
Executive VP Sales
& Marketing,
Kenosha Beef
International

Dr. Jeff Weiss
Superintendent,
Kenosha Unified
School District

Jim Kinney
Josh Kosmala
Bethany Ormseth

COMMITTEES

AUDIT
Kathleen Goessl
Cherie Julius
Ken Konjura
Patricia Merrill
David Nankin
Karl Ostby
Wes Saber (Chair)

EXECUTIVE
Anne Arbas
Sue Block
Tamarra Coleman
Jens Emerson (Chair)
Jamie Hogan
Donna Jamieson
Chad Navis
Aldo Pagliari
Wes Saber
Charles Skendziel
Dr. John Swallow
Chris Weyker

FINANCE
Jon Purcell
Wesley Ricchio
Melissa Thompson
Christian Venegas
Sara Verbsky (Chair)
Kyle Vitkus
Andrew Vogel
Chris Ziarko

NOMINATING
Sue Block
Jens Emerson (Chair)
Wes Saber
Dr. John Swallow
Chris Weyker

PERSONNEL
Jens Emerson (Chair)
Wes Saber
Dr. John Swallow

These directors completed their board service during the past year or as of April 25, 2023:

STAFF



Lisa Feltson,
Office Manager



Brooke Infusino, Director
of Talent Development



Becky Noble,
Director of Marketing



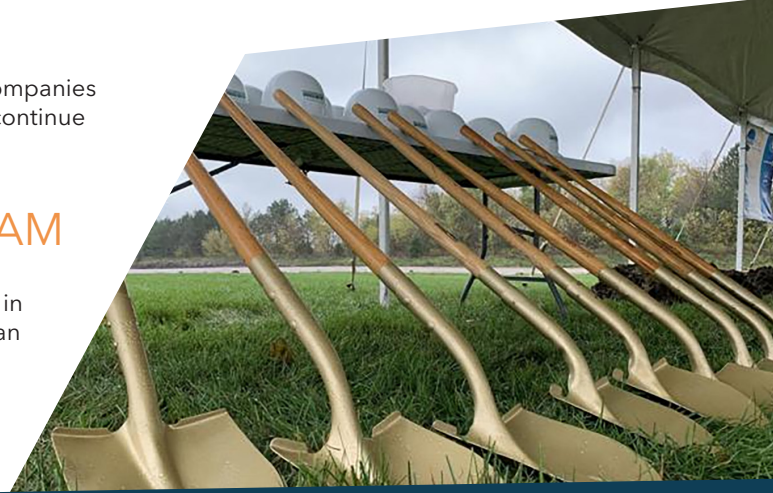
Brock Portilia, CFO

HELPING KENOSHA COUNTY COMPANIES PLAN FOR NEW BEGINNINGS.

Using a combination of state and local resources, KABA helps companies navigate financing options and incentive programs so they can continue to grow and thrive in Kenosha County.

REVOLVING LOAN FUND PROGRAM

KABA has helped hundreds of companies to relocate or expand in Kenosha County through its portfolio of community revolving loan funds which total \$30+ million. These funds are used to provide low-cost financing to companies creating jobs by expanding or establishing a new facility in Kenosha County.



In 2022, KABA extended over **\$3.65 million** in economic development financing to five area companies. These funds assisted or supported projects that resulted in nearly **\$160 million** of new investment and almost **300 jobs** created/retained.

KENOSHA COUNTY HIGH IMPACT FUND

The Kenosha County High Impact Fund administered by KABA, helps secure high quality economic development projects. "High Impact" developments are those which create at least 50 new, high paying jobs or have a capital investment of at least \$3 million.

Since its inception, the High Impact Fund has contributed to the creation of **2,100 new jobs** and **\$361 million in new private investment**.



TOP 10



MOVING THE NEEDLE? How Kenosha County measures up on key economic and social indicators

Kenosha County has shown impressive economic growth over the past decade, attracting new headquarters for major companies like Uline and Nosco and becoming home to large new distribution and production facilities for Amazon and HARIBO. Despite the considerable challenges brought on by the COVID-19 pandemic, Kenosha County's economic prospects for the future would also appear bright given its ideal location in the bustling I-94 corridor between Chicago and Milwaukee.

But how does Kenosha County's economic performance stack up with other similar counties in the Midwest and nationally? Moreover, to what extent have Kenosha County's recent economic development efforts made an impact on the well-being of the county's overall population in areas such as employment, income, and poverty reduction?

In this report and the accompanying (and more extensive) [data tool](#), we gauge Kenosha County's economic performance and the well-being of its population using a broad range of

indicators. We organize these indicators into categories: Population and Demographics; Education, Health, and Safety; Employment and Financial Stability; Housing; Economic Activity; and Property Values and Taxes.

In addition to documenting Kenosha County's performance since 2010 on each indicator, we provide data for 11 "comparison" counties to understand how Kenosha is doing relative to counties in the Midwest and nationally that have similar characteristics. This data reveal strengths and weaknesses and can be used to set priorities for the county's future advancement.

General information about each county included in the analysis is provided in the table below. Most are Midwestern counties located within a two-hour drive of a major metro area and have similar economic and demographic characteristics.

Unprecedented construction

If you've driven down I-94 recently, you've probably noticed a lot of construction activity. Everywhere you look, there seems to be cranes in the air and walls going up.

As of December 2022, there was...



5 million SF
recently
completed



6.5+ million SF
under
construction



3.5 million SF
planned/
proposed

1.

Moving the Needle

Kenosha County has landed several major economic development wins during the past decade. In the wake of these, KABA commissioned the Wisconsin Policy Forum (WPF) to examine the County's recent performance in terms of key economic and social indicators—to better understand the overall impact of these developments.

Positive results include impressive job growth, significant reductions in unemployment and youth poverty, sizable gains in property value, and a notable increase in the number of small business establishments. However, the analysis noted several areas of concern that local leaders may consider. Slow population growth, lagging educational attainment, lower wages and productivity, and high rates of rent burden stood out as areas the County fared poorly when benchmarked with 11 peer or comparison counties.

In 2022, the WPF published both a summary report – *Moving the Needle? How Kenosha County measures up on key economic and social indicators* – and a more robust online interactive data tool that helps gauge Kenosha County's performance, and its residents' wellbeing in several categories including population and demographics; education, health, and safety; employment and financial stability; housing; economic activity; and property values and taxes. The entire report can be found online at kaba.org/locate-expand/data-center.

KABA intends to use the report and its findings to influence future economic development initiatives and to work to ensure that economic development wins generate the intended benefits for the entire community.

2.

in 2022

3.

HARIBO opens for business

Gummi candy manufacturer HARIBO of America has finished construction on its new facility in Pleasant Prairie's Prairie Highlands Corporate Park. The first gummies rolled off the production lines in January - but the company doesn't expect to be fully operational until Q2 2023. The new 500,000+ SF production plant is its first in North America. HARIBO plans to produce 132 million pounds of gummi candies annually and employ nearly 400 when the first phase the Pleasant Prairie manufacturing campus is complete.

HARIBO also entered into a 157,656 SF, full-building lease at HSA Commercial's Bristol Highlands Commerce Center adjacent to their campus to store and distribute product.

Kenosha County Fam Tour for HR Professionals

In June, KABA hosted a community familiarization tour for human resources and recruitment professionals to explore the many assets that Kenosha County has to offer. The half-day tour was carefully curated to highlight details about Kenosha that attendees could share with job candidates as they consider Kenosha as a great place to work AND live.

The tour included stops pertaining to housing, arts, culture & entertainment, education, and healthcare as well as lunch with a panel discussion, and a post-event social.

4.



TOP 10



5.

Kroger opens state-of-the-art fulfillment center

Kroger, the nation's largest grocery retailer, has opened its ninth customer fulfillment center in the Village of Pleasant Prairie. The new 336,840 SF automated grocery and home delivery facility will serve customers in Wisconsin, northern Illinois, and northwest Indiana.

Kenosha County and the Village worked with Kroger to apply for a Transportation Economic Assistance (TEA) Grant from Wisconsin Department of Transportation. The TEA Grant financially assisted with the County Trunk Highway H transportation improvement costs associated with the development.

6.

Uline continues its tremendous growth in Kenosha County

Uline Inc. purchased app. 230 acres in 2022 near Interstate 94. The packaging materials supplier is building a new 1.4 million SF distribution center, the first of four new buildings at the site. Uline is among the fastest-growing businesses in the region, regularly either building or leasing large blocks of Kenosha County industrial space.



7.

Rehrig Pacific expands

Rehrig Pacific completed a 49,000 SF expansion and site improvements to their existing facility located in LakeView Corporate Park. The plastics manufacturer has occupied the Pleasant Prairie facility since the building was constructed in 1996. The addition houses 17 new plastics injection molding machines and added up to 36 new jobs. Rehrig Pacific is a fourth-generation, privately-held, CA-based company established in 1913.



in 2022

8.

Logisti- Center Pleasant Prairie

Nevada developer Dermody Properties is planning \$226 million industrial park at the 198-acre former Pleasant Prairie power plant site. The industrial park is expected to include three Class A industrial buildings, totaling more than 2.28 million SF.

9.

Uptown Lofts

Madison-based Gorman & Co. has begun construction on the Uptown Lofts in the section of the Uptown Kenosha neighborhood destroyed in 2020. Once completed, the mixed-use development will consist of 20,000 SF of retail space and 71 new, affordable residential units. A grocery store and restaurant that had previously been located in the neighborhood will have space in the new building and the Kenosha Public Library will be opening a new 7,000 SF Children's library in the space. The development is expected to be complete in fall 2023.

LakeView Technology Academy

KABA, Kenosha Unified School District, Gateway Technical College and the City of Kenosha are collaborating on a 52,000 SF facility for LakeView Technology Academy (LTA) at the Kenosha Innovation Neighborhood (KIN). This new purpose-built building will greatly enhance access to the school as its new location in the center of the City between KUSD's three comprehensive high schools. The new location would serve KUSD's other high school students with additional programming covering topics such as CNC operation and automated manufacturing.

10.

PROGRAMMING



Business Lunch @ The Club at Strawberry Creek

HARIBO Interest Fair @ Gateway's Madrigano Auditorium

Economic Roundtable with Sec. Barca @ UW-Parkside

EVENTS

KABA hosts various events throughout the year to inform and engage its investors and the business community about topics central to moving Kenosha County forward. In 2022, KABA held its keystone events below, and collaborated with area businesses and organizations on many more. See our upcoming events at kaba.org/news/events.

Business Lunch: a program series held several times a year intended to educate and inform KABA investors, partners, and the community at-large. Participants enjoy lunch, networking, and a keynote presentation.

Annual Meeting: a breakfast event featuring an esteemed keynote speaker as well as board of directors election results and an update on the KABA organization and Kenosha County economic development initiatives.

Inspire: a premier one-day leadership development experience featuring high-caliber national and regional speakers & experts providing inspirational content to elevate your personal and professional leadership journey.

Ovation Awards: an awards dinner recognizing companies and individuals in Kenosha County that have exhibited a history of growth, innovation, and a positive overall impact on the community.

Holiday Social: a purely social open house-style event with food, drinks, networking, and music.



Inspire @ Journey Church

& EVENTS

TRAINING

KABA strives to help companies keep their employees highly skilled and motivated by offering training courses, workshops, briefings and roundtables for business members, community leaders, and educators. KABA maintains a comfortable and convenient training center at its office and can also coordinate customized, on-site training programs for individual companies.

Training offered in 2022 included Fundamentals of Supervision Series in partnership with Gateway Technical College, Leadership Development Series by Living as a Leader, Forklift Operator training, and First Aid/CPR & AED training.



Ovation Awards @ the UW Parkside DeSimone Arena



Annual Meeting @ UW-Parkside Student Center Ballroom



Holiday Social @ The Apis

THE KABA FOUNDATION

The mission of the Kenosha Area Business Alliance Foundation, Inc. is to develop educational initiatives in collaboration with local Kenosha schools to increase graduation and educational attainment rates, improve the quality of education, and foster the best school system in the state. Learn more at kaba.org/about/kaba-foundation.

The KABA Foundation manages and supports many of its own programs as well as initiatives championed by other organizations with the goal of having a positive impact on the educational systems in Kenosha County. Some of those initiatives include:

The KABA Mentor Program: a school-based mentoring program that pairs volunteer mentors from the business community with a K-5th grade or middle school student to work on academic and social skills.

The Catalyst2Careers Scholarship Program: a partnership with Carthage College and UW - Parkside to recognize talented high school seniors in the Kenosha Area who are pursuing post-secondary education within Kenosha County.

Building Our Future: a network of community leaders representing all sectors of Kenosha County committed to improving student outcomes.

The Gateway Promise: helps ensure qualifying students seeking an education to begin their own path to success through a Gateway Technical College degree.

FINANCIAL INFORMATION

Kenosha Area Business Alliance, Inc. and its Subsidiaries

	2022	2021
Assets		
Cash & Short Term Investments	\$ 16,234,989	\$ 10,426,338
Notes/Advances Receivable Less Reserves	13,208,860	16,291,679
Other Assets	3,111,258	2,946,552
Total Assets	\$ 32,555,107	\$ 29,664,569
Fixed Assets		
Property & Equipment Net of Accumulated Depreciation	19,543,077	16,251,441
Total Assets & Fixed Assets	\$ 52,098,184	\$ 45,916,010
Liabilities		
Accounts Payable & Other Short Term Liabilities	2,466,366	2,460,271
Notes Payable	14,529,854	11,521,761
Total Liabilities	\$ 16,996,220	\$ 13,982,032
Net Assets		
Unrestricted	16,789,094	16,788,169
Temporarily Restricted	18,312,870	15,145,809
Total Net Assets	\$ 35,101,964	\$ 31,933,978
Total Liabilities and Net Assets	\$ 52,098,184	\$ 45,916,010

Unaudited Consolidated Statement of Activities - All Funds, Compiled for the Years Ending:

	2022	2022	2021	2021
	Operating	Loan Funds/Bldg	Operating	Loan Funds/Bldg
Revenues				
Contract Services	\$ 235,000	\$ —	\$ 210,000	\$ —
Membership Dues	322,416	—	328,363	—
Loan Service Fees	28,725	—	69,315	—
Training/CEO Roundtable Fees	72,226	—	46,380	—
Interest (Bank, Investments & Notes)	56,824	543,479	87	542,206
Revolving Loan Fund Administration	781,000	—	720,000	—
Event Revenue	103,172	—	30,090	—
Rent	—	857,533	—	698,126
Other (Grant Revenue)	16,081	3,541,351	35,418	4,674,295
Total Revenue	\$ 1,615,444	\$ 4,942,363	\$ 1,439,653	\$ 5,914,627
Expenses				
Personnel Costs	1,142,400	—	1,099,680	—
Revolving Loan Fund Administration	—	781,000	—	720,000
Travel / General Admin / Training / CEO Roundtable	114,913	—	99,699	—
Office Equipment	3,767	1,201	4,456	—
Mailing / Printing / Office Supplies	3,338	—	6,817	95
Accounting / Auditing / Legal	34,382	251,488	29,508	108
Insurance (Business & General Liability)	17,231	5,000	17,097	5,000
Telecommunications / Computer Services	35,501	1,601	37,906	1,309
Rent / Space Maintenance / Utilities	103,633	45,908	100,721	32,149
Membership & Business Development	86,202	—	40,231	—
Depreciation & Property Taxes & Interest	22,322	844,526	24,068	599,394
Other (Grant Expense)	—	53,000	—	2,090,750
Reserve Adjustment	—	46,500	—	(124,000)
Total Expenses	\$ 1,563,689	\$ 2,030,224	\$ 1,460,183	\$ 3,324,805
Change In Net Assets	\$ 51,755	\$ 2,912,139	\$ (20,530)	\$ 2,589,822

KABA INVESTORS

BANKING

Blackhawk Community
Credit Union
BMO
Community State Bank

Educators Credit Union
First American Bank
First Business Bank
Heartland Bank and Trust
Company

Johnson Financial Group
McHenry Savings Bank
PNC Bank
Southern Lakes Credit
Union

State Bank of the Lakes
Tri City National Bank
TruStone Financial

US Bank
Town Bank, A Wintrust
Community Bank

BUSINESS SERVICES

Alarm Detection Systems Inc.
Brookstone Printing
Catalyst Exhibits, Inc.
Chef David's Catered Events

DLH Consulting
Services, LLC
Double E Workplace
Solutions LLC
Econoprint

First Onsite
Hallum Enterprises, Inc.
Kenosha Private Police
Leitch Printing Corporation

Living As A Leader
Martin Group
Minuteman Press Kenosha
OFS

Perrine Property
Maintenance, LLC
Signarama
The Payroll People

CONSTRUCTION & RELATED INDUSTRIES

Adams Power
Bane-Nelson, Inc.
Berghammer Construction
Corporation
Bukacek Construction
C.G. Schmidt, Inc.
Camosy Construction
Cicchini Asphalt, LLC

Dickow-Cyzak Tile
Company
DORAL Corporation
Electrical Contractors of
Wisconsin, Inc.
Gilbane Inc.
Greenfire
IBEW/NECA Labor
Management Committee

JDR Painting LLC
J.H. Findorff & Son Inc.
Joseph J. Henderson &
Son, Inc.
Keller, Inc.
Kenosha Plumbing
Lake County Pipe &
Supply Co.

Lee Mechanical Inc.
Liftpro, LLC
Martin Petersen Co, Inc.
NEXT Electric, LLC
Pepper Construction
Pieper Electric, Inc.
Point Ready Mix, LLC
Postorino Construction
Finishes

Rasch Construction &
Engineering, Inc.
Riley Construction
Stuckey Construction
Company, Inc
UA Local 118
Wisconsin Fuel & Heating

ENGINEERING & ARCHITECTURAL SERVICES

Clark Dietz, Inc.
Garland Alliance, Inc.
Graef - USA

JSD Professional
Services, Inc.
Kueny Architects, LLC

Partners in Design
Architects, Inc.
Pinnacle Engineering
Group

Ruekert Mielke
The Sigma Group, Inc.

Zimmerman Architectural
Studios

GOVERNMENT & EDUCATION

Carthage College
City of Kenosha
Gateway Technical College
Herzing University
Kenosha County

Kenosha High School of
Technology Enhanced
Curriculum
Kenosha Unified School
District

St. Joseph Catholic
Academy
The Prairie School
Town of Brighton
Town of Paris

Town of Wheatland
University of Wisconsin
Parks
Village of Bristol
Village of Paddock Lake

Village of Pleasant Prairie
Village of Salem Lakes
Village of Twin Lakes
Village/Town of Somers
Wilmot Union High School
District

HEALTH CARE & RELATED INDUSTRIES

Abbott
Advocate Aurora Health
Daniel R. Santarelli DDS
Doctors of Physical Therapy
Froedtert South

Frontida, Inc.
Fulmer Dentistry
Guided Wellness
Counseling, SC
Hospice Alliance

Kenosha Community Health
Center, Inc.
Kenosha Radiology Center
Kenosha Visiting Nurse
Association & Affiliates

Nexus Pharmaceuticals, Inc.
OccuCare
Professional Services
Group, Inc.
Third Coast Retina

United Occupational
Medicine
We Rock the Spectrum
Racine County

INDIVIDUAL

Susan Crane, Crane Farms
Jerry Franke

Ronald Frederick

Nancy Haggerty

Michael Montemurro

Russell Ziemann

INSURANCE, LEGAL & FINANCIAL SERVICES

Alia, DuMez &
McTernan, S.C.
Ameriprise Financial
Services, Inc.
Andrea & Orendorff, LLP
Axion Risk Management
Strategies
CliftonLarsonAllen LLP

Davison Law Office, Ltd.
Deiningner & Co., Inc.
DeWitt LLP
Ehlers and Associates, Inc.
Fitzpatrick Group of Wells
Fargo Advisors
Gateway Mortgage
Corporation

Godfrey & Kahn S.C.
Godin Geraghty Puntillo
Camilli & Hughes, SC
Guttormsen & Hartley, LLP
Jacsten
Lindner & Marsack, S.C.
Lueder Financial Group -
Northwestern Mutual

O'Neil, Cannon, Hollman,
DeJong & Laing S.C.
Patton Law Office SC
Prophet Wealth
Management
Sam Ruffolo Agency
Seymour & Associates, S.C.
Specialized Accounting
Services LLC

The Horton Group
The Trotter Insurance
Group powered by M3
Insurance
Vizance
Vrakas CPAs + Advisors
Wipfli LLP

IT SERVICES

CCB Technology
CMIT Solutions of SE
Wisconsin

DeKind Computer
Consultants

Horizon Managed Services
Leeward Business Advisors

NSR Business Solutions
Offsite, LLC

Platinum Systems, Inc.

KABA INVESTORS

MANUFACTURING

4Front HPD NA Advent Tool & Manufacturing, Inc. Allied Plastics, Inc. Ardent Mills LLC Ariens Company ASYST Technologies LLC Badgerland Products, Inc. Balcan USA Inc Beckart Environmental, Inc. Bio Fab Technologies, Inc. Colbert Packaging Corporation Contact Rubber Corporation	Cordeck Edible Cuts EMCO Chemical Distributors, Inc. Fair Oaks Foods Finishing & Plating Service, Inc. Five Star Fabricating, Inc. GEM Manufacturing Inc. Good Foods Group, LLC Haribo Horizon Systems Machining, Inc. Industrial Toolz/ Handi-Ramp	InSinkErator Jockey International, Inc. Kenall Kenosha Beef International, Ltd. Kenosha Lumber & Manufacturing Co., Inc. Kirsan Engineering, Inc. Kitchen Cubes L & M Corrugated Container Corp. Lakeside Steel & Mfg. Co. LMI Packaging Solutions, Inc. Medtorque, Inc. Mikrotech, LLC	MTI – A Steel Partners Company Niagara Bottling, LLC Northlake Engineering, Inc. Nosco Ocean Spray Cranberries, Inc. Ocenco, Inc. Parker Plastics, Inc. Powerbrace Corporation Puratos USA Quest Products, LLC R+D Custom Automation Reflective Concepts, Inc. Rehrig Pacific Company	Resideo Genesis RPM International Inc. - Specialty Coatings Group Rust-Oleum Corporation S.C. Johnson & Son Silgan Containers Snap-on Incorporated Stabio North America, LLC Tecomet The Deli Source, Inc. The Metal Shop UCC Environmental ViskoTeepak Vonco Products, LLC Woodwrights, Inc.
---	---	---	---	---

MEDIA/MARKETING/DESIGN

Backyard Dream Dooley & Associates, LLC	Equity Creative Kenosha.Com	The Gratzl, Inc.	True North	Upload Partners
--	--------------------------------	------------------	------------	-----------------

NON-PROFIT

4C For Children Ascension All Saints Hospital Foundation Boys & Girls Club of Kenosha FIRE	Goodwill Industries of Southeastern Wisconsin, Inc. Journey Church KAC, Inc. Kenosha Area Chamber of Commerce, Inc.	Kenosha Community Foundation Kenosha Country Club Kenosha County Food Bank Kenosha Human Development Services, Inc.	Kenosha YMCA Lake County Partners MRA Shalom Center Southshore Realtors Association, Inc.	The Sharing Center United Way of Kenosha County Visit Kenosha Visit Pleasant Prairie
---	--	--	--	--

REAL ESTATE

Bear Real Estate Group Berkshire Hathaway Home Services Epic Real Estate Cove Realty Darwin Realty & Development Corporation	Douglas Kent Development, Inc. First Industrial Realty Trust, Inc. Gorman & Company, Inc. Janko Group	Lee & Associates of Illinois LLC Legacy Varin Property Management, LLC Newmark Knight Frank	Petretti Builders & Developers Pitts Brothers & Associates LLC Prime Realty Group of Wisconsin, LLC	Tri-State Realty, Ltd. Venture One Real Estate, LLC Wangard Partners, Inc. Woodview Group Zilber Property Group
---	--	---	--	---

RETAIL ESTABLISHMENTS

Apis Hotel and Restaurant Candlewood Suites Carpets Plus Outlet, Inc. Cast, LLC DBA Sazzy B	Chiappetta Shoes, Inc. Crown Trophy Kenosha LaMacchia Travel Paielli's Bakery, Inc.	Rustic Road Brewing Co. Springhill Suites by Marriott Kenosha	Tenuta's Delicatessen & Liquors, Inc. The Club at Strawberry Creek	Total Furniture Waukegan Tire - Kenosha Woofman's Lodge Pet Resort
--	--	---	---	---

STAFFING SERVICES

Atlas Employment Services, Inc.	Express Employment Professionals Halpin Staffing Services	Matthews Professional Employment, Inc.	Parallel Employment Group QPS Employment Group	TempsNow Employment & Placement Services LLC
------------------------------------	---	---	---	---

TELECOMMUNICATIONS & UTILITIES

Alliant Energy	ClearCom Inc	Data Cable, Inc.	WEC Energy Group
----------------	--------------	------------------	------------------

TRANSPORTATION, DISTRIBUTION & WAREHOUSING

Amazon ATC Transportation LLC Central Storage Warehouse CJW Inc. Doheny's	Five-Star Moving Crew Flint 94 Commerce Center Fresenius Medical Care TruBlu Logistics Geneva Supply GFI Midwest LLC	Heartland Produce Co. Kem Krest Kutzler Express, Inc. Meijer Midwest Refrigerated Services	ODW Logistics Otto Nelson Moving and Storage Palmen Auto Stores Pepsi Beverages Company SMT Packaging	Trifinity Uline, Inc. VP Xpress, LLC Yamaha Motor Corporation, USA
---	---	---	--	--

The Kenosha Area Business Alliance (KABA) is Kenosha County's economic development organization and business association.

A public-private partnership, KABA is focused on making the Kenosha Area a better place to do business, live, and work, through: (1) economic development initiatives that stimulate private sector investment and job creation; (2) providing programs, products, and services that improve the competitiveness of Kenosha Area employers and their employees; and (3) supporting educational initiatives with a goal of enhancing student achievement and overall school performance.



5500 Sixth Avenue, Suite 200, Kenosha, WI 53140
262.605.1100 | info@kaba.org

www.kaba.org