



KABA ANNUAL REPORT

FIVE YEAR PLAN: 2013-2017...



6,974+

jobs



\$1.1 B

in capital
investment



\$15.8 MM

in new project
financing



435

companies visited
through BRE
Program



DEAR INVESTORS, PARTNERS, & STAKEHOLDERS

On behalf of the Board of Directors and staff, I am pleased to share the 2017 Annual Report for the Kenosha Area Business Alliance (KABA).

2017 was another strong year for economic development in the Kenosha Area. It also marked the end of KABA's current 5-year scorecard period. During this time (2013-2017), KABA has supported economic development projects that have generated more than \$1.1 billion in new investment and added nearly 7,000 jobs to Kenosha County payrolls.

The most significant win of the past year was the announcement that Haribo will build its first North American production facility in Pleasant Prairie. The size and scale of this project are impressive and KABA and its partners worked closely with Haribo officials to put this deal together. Ultimately, it led to the Village of Pleasant Prairie's acquisition of a nearly 500-acre development site which will accommodate Haribo's campus and provide an incredibly high profile location option for other large-scale developments.

There were numerous additional development wins throughout the community and region. The rapid expansion of ULINE's Kenosha County footprint continued with multiple new facilities coming online in 2017. Also, international electronics manufacturer Foxconn announced plans for a massive manufacturing complex in Racine County, just across the Kenosha County line. Reported as a \$10 billion project that may eventually generate 13,000 jobs, this is potentially one of the largest economic development projects in U.S. history. As the community, region and state work to comprehend the potential impacts, area companies are looking to understand potential business opportunities that may emerge, while also preparing for a more intense competition for talent.

KABA continues to invest considerable time, energy, and resources toward working with area employers and education and workforce development partners to support initiatives that strengthen and grow Kenosha County's talent pipeline. Talent development, retention, and recruitment are all part of the mix. Our initial efforts here have shown promise, but we need to find ways to accelerate and scale these initiatives.

While concerns about the depth and breadth of the labor force are front and center, there should be tremendous optimism about the strength of the economy, the major developments that are coming to our community and region, and the opportunities that are being created for our communities, people and companies.

Thank you for your continued support, investment, and involvement.

Best wishes for a prosperous 2018,

Todd Battle, President



ECONOMY.

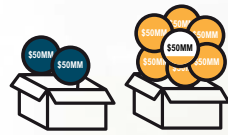
Kenosha County had a very successful 2017 in terms of economic development. Two of Wisconsin's largest economic development projects in 2017 - Haribo and Gold Standard Baking - were in Kenosha County.

The KABA Scorecard is a set of primary performance indicators to track the overall performance of KABA and the Kenosha Area in regards to economic development. It serves as a visual representation of its long range goals.

2017 SCORECARD



842
jobs
2017 GOAL:
1,000



\$326.5 MM
new private
investment
2017 GOAL:
\$100 MM



57
leads
2017 GOAL:
50



16,000
2017 GOAL:
20,000



\$2.3 MM
2017 GOAL:
\$3 MM



84
2017 GOAL:
100

HARIBO

Jobs: **400** | Capital Investment: **\$242 million** | Project: **500,000 SF** advanced manufacturing facility



German candymaker Haribo selected Prairie Highlands Corporate Park in the Village of Pleasant Prairie as the site of its first North American manufacturing plant.

When complete, Haribo's new facility will be one of the largest confectionery production facilities in the nation.

OTHER EXPANSIONS/RELOCATIONS INTO KENOSHA COUNTY

Company	Project	Jobs	Investment
Gold Standard Baking	200,000 SF building	96	\$42 million
Prestige Metal Products	85,630 SF building	46	\$2.5 million
Edible Cuts	70,000 SF building	200+	\$8 million

ECONOMY.

At its core, KABA fosters economic development by helping companies that are in Kenosha County innovate, expand and thrive; and by assisting companies that want to make a move to or within Kenosha County. While everything KABA does could be considered economic development, working directly with companies in all aspects of their growth is highest on that list.

ULINE

Jobs: **975** | Capital Investment: **\$150+ MM** | Project: **250,000 SF** HQ campus; **1MM SF** distribution facility; & **800,000 SF** distribution; **80,000 SF** office

In 2017, Uline completed a massive expansion project which doubled the size of their corporate campus in Pleasant Prairie. They also relocated their entire Midwest Distribution Center Operations from IL to Kenosha.

KABA tracks developments throughout Kenosha County. Below is a listing of the larger expansion projects that were announced, in progress or completed in 2017 [Note: KABA did not assist with all of the projects listed]:

Company	Project	Jobs	Investment
Froedtert South	194,000 SF building	100	n/a
Five Star Fabricating	110,000 SF building	25	\$13 million
Commercial Plastics	67,000 SF building	100	\$9 million
Olds Products	126,000 SF building	25	\$7 million
FNA Group	45,000 SF building	40	\$2 million
Children's Hospital	30,000 SF building	46	\$1.4 million
Kroger Commissary	new equipment	10	\$19.2 million
Fairfield Inn & Suites	108-room hotel	18	n/a



KABA REVOLVING LOAN FUND (RLF) PROGRAM

KABA has helped hundreds of companies to relocate or expand in Kenosha County through its \$30+ million portfolio of community revolving loan funds. These funds are used to provide low-cost financing to companies creating jobs in Kenosha County by expanding or establishing a new facility in the area.

Company: **Endurance RE (Frontida, Inc)**
Project: Acquisition of professional office building in Downtown Kenosha for HQs
Total project investment: \$275,000
KABA loan amount: **\$110,000**
No. of jobs created/retained: 8

Company: **Gorman Heritage House**
Project: Rehabilitation of Heritage House in Downtown Kenosha
Total project investment: \$25,000,000
KABA loan amount: **\$1,250,000**
No. of jobs created/retained: 80

Company: **Doheny Enterprises**
Project: Construction of new 200,000 SF facility
Total project investment: \$15,000,000
KABA loan amount: **\$1,040,000**
No. of jobs created/retained: 150

KABA's loans in 2017 supported:

\$2.4 MM
gap financing

238
jobs

\$40.3 MM
total capital investment

273,785 SF
new development/
redevelopment

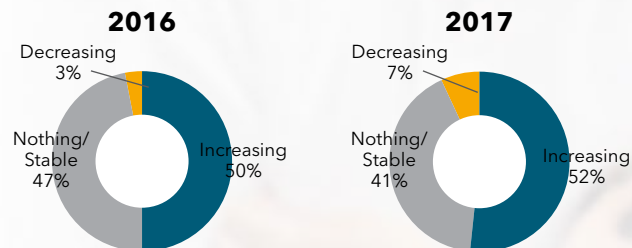
ECONOMY.

Every year, KABA takes the pulse of Kenosha County companies through its Business Retention & Expansion (BRE) Program. Employers provide KABA with valuable information about the health of the county's economy and identify opportunities and challenges to help KABA focus its development efforts. In 2017, KABA staff conducted formal interviews with 84 companies.

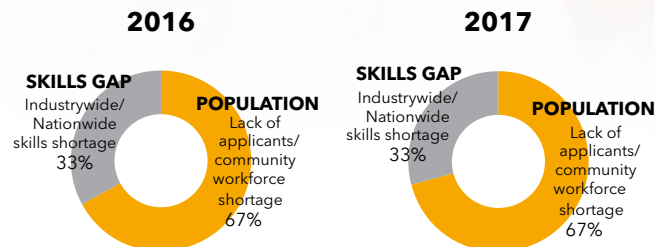
BRE: RECRUITMENT

KABA asked executives if they thought there is a nation-wide shortage of particular skills needed or if the shortage just exists in our community. Most executives thought that both were true, but that the need for our community to grow to meet the demand for open positions is currently the most important issue.

How are your hiring needs?

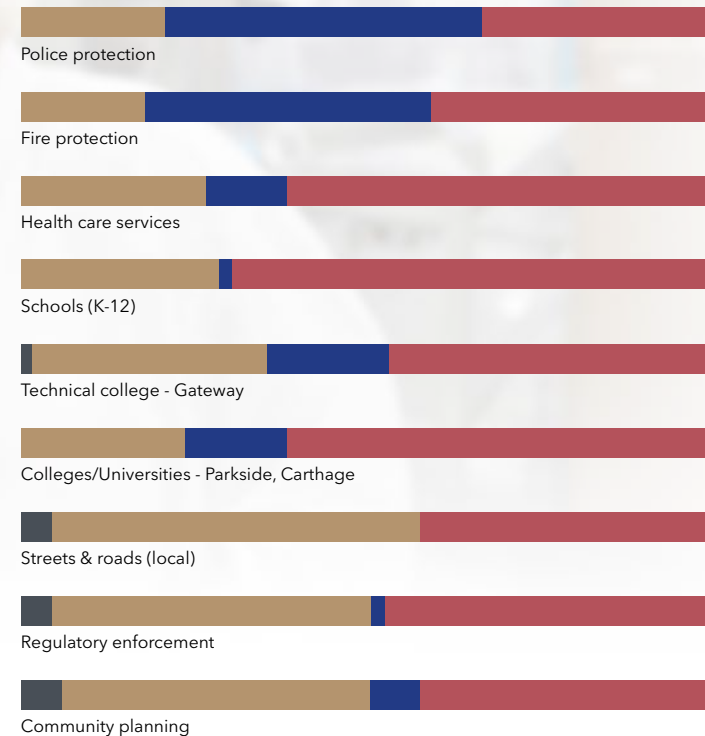


What is your recruitment issue(s)?



BRE: COMMUNITY SERVICES - HOW ARE WE DOING?

Company executives reported overall a high level of satisfaction with community services. Most executives listed education and infrastructure as the most important issues: schools (K-12), technical education/colleges, public safety and the current condition of our roads/streets - including better access to downtown.



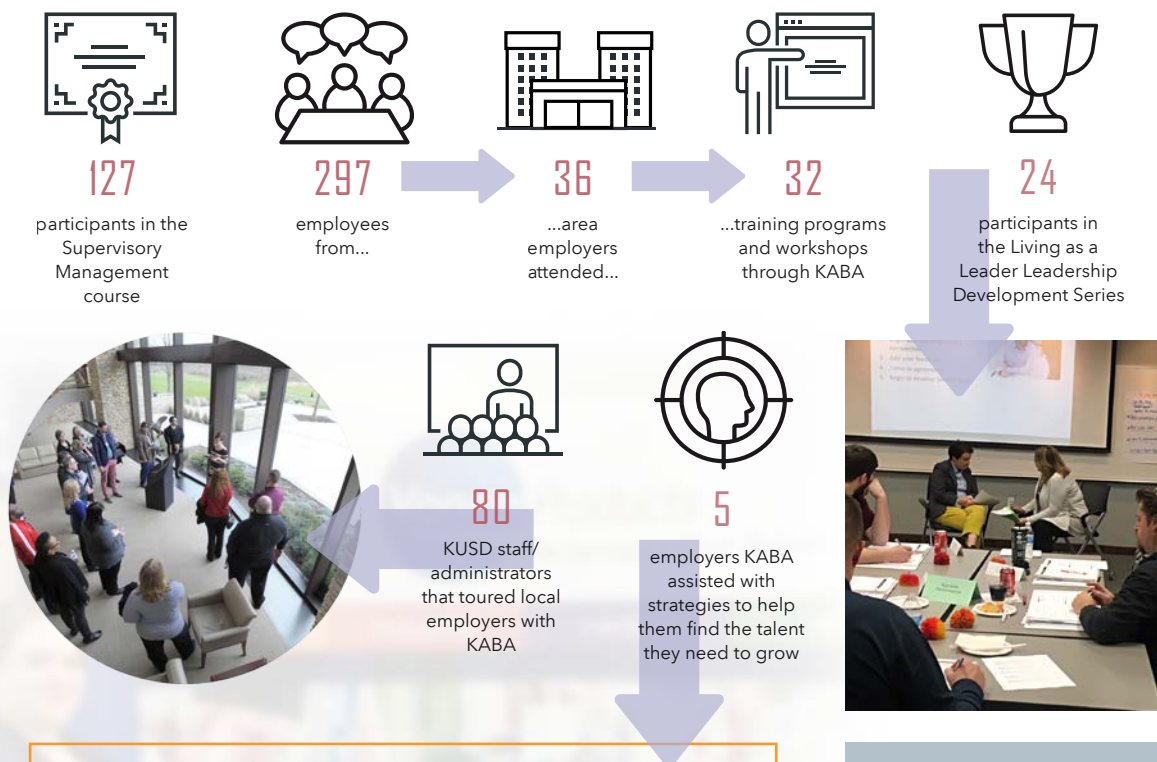
Executives rated their satisfaction as:

- Not very satisfied
- Satisfied
- Very satisfied
- Neutral

TALENT.

People are at the heart and soul of any business or community. Attracting, retaining and engaging with people to live, work and find success in Kenosha County is an ideal to which KABA is strongly committed.

In 2017, KABA worked with its partners and area employers to launch, advance and promote talent initiatives. Below is a snap-shot of some of those efforts. To learn more, visit kaba.org/initiatives.



CASE STUDY: VONCO PRODUCTS

To assist Vonco Products with hiring demands at their new facility in the Salem Business Park, KABA developed and executed a hiring blitz and community open house.

The hiring event was held at the Salem Lakes Town Hall in two sessions with the following results:

60 candidates were interviewed
30 were hired full-time

INSPIRE SOUTHEAST WISCONSIN

Inspire Southeast Wisconsin is a powerful web-based platform that provides a central hub where area students (grade 6-12) and educators - including those in Kenosha Unified School District - can interact with local employers and career coaches to explore a variety of industries, employers and career-based learning experiences (CBLE) in our region. Participation is free and open to any industry or sector.

Within the seven-county Southeast Wisconsin region:

327
employers have active company profiles

69,000
CBLEs between business & K-12

Learn more:
kaba.org/inspiresewi



TALENT STRATEGIES

In 2018, KABA will continue to implement best practices and strategies to improve our approach to workforce development, with particular emphasis on:

- 1 Helping employers be more effective and aggressive with outreach.**
- 2 Aligning employers/educators/community around promoting a career-going culture for students in K-12 and higher education.**
- 3 Showcasing and sharing best practices on developing and promoting 'total package' (company & community) when recruiting.**



TALENT.

Through the Kenosha Area Business Alliance Foundation, Inc., KABA plays an active role in the Kenosha area's education system with a mission to increase graduation and educational attainment rates, improve the overall quality of education and foster the best school system in the state. Initiatives include an elementary school mentoring program, annual scholarship awards, and support for various other educational initiatives.

THE GATEWAY PROMISE

KABA is proud to support the Gateway Promise, which ensures Kenosha County, Racine County and Walworth County high school graduates, who meet program eligibility requirements, can attend Gateway Technical College tuition-free. This unique program will help area high school students realize their dream of attending college and begin their path to career and personal success.

150

high school graduates
participating in the first
group of Gateway Promise
program students



BUILDING OUR FUTURE KENOSHA COUNTY

Our schools can't do it alone, which is why KABA strongly supports Building Our Future Kenosha County (BOF).

In 2018, BOF hired a director of operations and research and evaluations manager and established permanent space at the United Way offices. They are working with their partners in five identified outcome areas: community engagement, smart beginnings, school success, high school graduation, and post-secondary education and career preparation.

Learn more at buildingourfuturekc.org



125

mentors
participating in
the KABA Mentor
Program served...



146

...students from
Kenosha Unified
and other school
districts throughout
the County



\$18,802

in scholarships
awarded to Kenosha
County graduates
through the
CatalystToCareers
program



\$50,000

donated by the
foundation to
other education-
related initiatives in
Kenosha County

Learn
more:
[kaba.
org/
about/
kaba-
foundation](http://kaba.org/about/kaba-foundation)

Today's students are tomorrow's workforce!



TALENT.

KABA is excited and optimistic about the future of Kenosha County. Through its programming and initiatives, KABA strives to bring the community together and keep the conversation going about the direction Kenosha County is headed. There is much to be celebrated and room for improvement - and always a need to coordinate our efforts and stay informed and empowered to lead.

INSPIRE

Inspire is a series of activities, events and resources designed to empower existing and emerging leaders to create change in our community. As part of this platform, KABA hosts a one-day leadership experience to challenge and inspire attendees to walk away with ideas on how they can be a better leader in their careers, communities, and personal lives. The 2017 event featured exciting national and regional leaders including best-selling author Jon Gordon and Jockey spokesmodel Chris Van Etten (pictured left).



"It lived up to its name... I left feeling inspired!!" - Ann, Uline
"I loved the energy and enthusiasm in the room and the genuinely world-class line-up." - Mary, Jockey International

450

attendees

5

speakers

10

corporate
sponsors

Inspire 2018 will be held October 12, 2018.
Learn more: kaba.org/about/inspire

EVENTS/PROGRAMMING

KABA hosts various events throughout the year to inform and engage its investors and the business community about topics central to moving Kenosha County forward. Events include groundbreakings, workshops and industry roundtables, training, awards receptions, candidate forums, young professional programming, social events, and more.



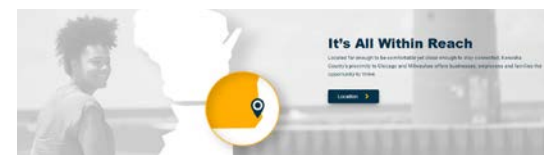
55+

events/
programming
hosted by KABA in
2017



KABA.ORG

KABA launched a redesigned website - kaba.org. The new site's theme is 'Perfectly Centered' and talks about how Kenosha County is an area thriving with possibility. It features rich content about doing business here as well as a new event calendar, blog, and social media feeds.



More than 380 people attended the 2017 Ovation Awards celebrating business excellence in Kenosha County. The following award winners were honored at the event:

Business of the Year: **KENALL MANUFACTURING**

Small Business of the Year: **KENOSHA KINGFISH BASEBALL CLUB**

Entrepreneur of the Year: **S. R. MILLS, BEAR REAL ESTATE GROUP**

Fast Five: **FRONTIDA ASSISTED LIVING, INC.**
OTTO NELSON MOVING & STORAGE
PURATOS CORPORATION
SL MONTEVIDEO TECHNOLOGY, INC
VONCO PRODUCTS, LLC

OVATION AWARDS

PLACE.

Place is important. People are increasingly choosing a place to live before choosing a place to work. As companies jockey for employees, having a vibrant, healthy community to attract and retain talent is paramount. KABA strongly and actively supports the efforts of ongoing community initiatives that promote and improve Kenosha County as a great place to live, work and play.

YLINK: YOUNG LEADERS IN KENOSHA



200

YPs attended one of the six events during YPWeek Kenosha



22

events/programs hosted for YPs



25

dynamic YPs serve on the YLink Leadership Team



14

YPs graduated from the Nonprofit Board Prep Program

Learn more: ylinkenosha.org

YLink is Kenosha County's young professional organization and is administered by KABA. YLink acts as the catalyst to connect, attract, retain and foster relationships, professional growth and community-mindedness among young professionals in the Kenosha Area.

FUTURE 5 AWARDS

Future 5 honors five individuals who live or work in the Kenosha area, and who are positively influencing quality of life in our community through professional accomplishments, community involvement, civic engagement, leadership and inspiring vision for Kenosha's future.



The 2017 Future 5 Winners:

- > **John Hogan**, Dooley & Associates
- > **Megan Wells**, MG
- > **Brandi Cummings**, Kenosha Public Library
- > **Sharmain Harris**, Racine Kenosha Community Action Agency
- > **Laura Tyunaitis**, Kenosha Area Convention & Visitor's Bureau

NONPROFIT BOARD PREP PROGRAM

This YLink program trains YPs interested in serving on local non-profit boards. Participants learn about nonprofit structure, strategic planning, financial management, legal & ethical responsibilities and fundraising. A social was held at the end of the 2017 session and printed "lookbooks" were created to connect grads with local nonprofit leaders.

DOWNTOWN KENOSHA, INC. (DKI)

In 2017, DKI Executive Director Nicole Thomsen was a fresh and energetic force for the organization. Several exciting developments were announced and are taking shape including the redevelopments of the historic Heritage House into the Stella boutique hotel and the former Kenosha Youth Foundation into the Residences at Library Park. The Kenosha Creative Space opened its doors as well as The O at Backyard Dream Studios coworking space and the Lofts 2. In all, 26 businesses launched in downtown Kenosha. KABA believes Downtown Kenosha is poised for great things in 2018 and beyond.

Learn more at downtownkenosha.org



LEADERSHIP

STAFF

Todd Battle, President

Lisa Feltson, Office Manager

Brooke Infusino,
Director of Talent Development

Jeanne Geiger,
Administrative Assistant

Becky Noble, Director of Marketing

Brock Portilia,
Director of Finance & Administration

Heather Wessling Grosz,
Vice President of Economic
Development

COMMITTEES

Audit

David Geertsens
Kathleen Goessl
Cherie Julius
Karla Krehbiel*
Ken Konjura
David Nankin
Karl Ostby

Executive

Anne Arbas
Susan Crane
Timothy Geraghty
Randy Hernandez
Jerry King
Karla Krehbiel
Aldo Pagliari
Brenda Penesis

Peter Sinsky
Charles Skendziel
Frank Unick
Susan Ventura*
Timothy Woods

Finance

Sue Block
Andrea Bukacek
Jens Emerson*
Nate Franke
Paul Krumrie
Wesley Ricchio
Sara Verbsky
Kyle Vitkus
Andy Vogel

Nominating

Michael Gardner
David Geertsens
Randy Hernandez
Mark Jaeger
Karla Krehbiel
Frank Unick
Susan Ventura*
Chris Weyker

Personnel

Karla Krehbiel
Frank Unick
Susan Ventura*

* denotes Chair

BOARD OF DIRECTORS



Chair
Susan Ventura
Executive Vice
President,
Froedtert South



Vice Chair
Karla Krehbiel
Regional
President,
Johnson Bank



Secretary
Susan Crane
Owner,
Crane Farms



Treasurer
Peter Sinsky
CFO, Riley
Construction
Company, Inc.

Dr. Bryan Albrecht
President, Gateway Technical
College

Anne Arbas
Senior Vice President & CFO,
Jockey International, Inc.

Randy Barfield
Vice President for Business,
CFO, Carthage College

Randy Ekern
Vice President Global
Operations & Supply Chain,
InSinkErator

Dr. Deborah Ford
Chancellor, University of
Wisconsin-Parkside

Michael Gardner
General Manager - Electric
Systems, SL Montevideo
Technology, Inc.

Timothy Geraghty
Attorney, Godin Geraghty
Puntillo Camilli, SC

Randy Hernandez
Executive Vice President,
Operations,
Kenall Manufacturing

Jamie Hogan
President, Specialized
Accounting Services LLC

Chet Keizer
President, IRIS USA, Inc.

Jerry King
CFO, Kenosha Beef
International, Ltd.

Chad Navis
Director of Industrial
Investments, Zilber Property
Group

Aldo Pagliari
Senior Vice President -
Finance & CFO,
Snap-on Incorporated

Brenda Penesis
Plant Manager, ACCO Brands

Kurt Penn
CEO, Good Foods Group, LLC

Randall Rickman
Publisher, Kenosha News

Dr. Sue Savaglio-Jarvis
Superintendent of Schools,
Kenosha Unified School District

Paul Schrock
Plant Director,
Niagara Bottling, LLC

Corey Schultz
Vice President of
Sales & Marketing,
Five Star Fabricating, Inc.

James Sherman
Director, Wholesale &
Customer Solutions,
WEC Energy Group

Charles Skendziel
Owner, Equity Creative

Mike Stone
General Manager, Amazon

Frank Unick
CFO, Uline, Inc.

Chris Weyker
CEO, Kenosha Achievement
Center, Inc.

Timothy Woods
Director - Manufacturing
& Operations, North America,
SC Johnson & Son, Inc.

FINANCIAL INFORMATION

Kenosha Area Business Alliance, Inc.
and Its Subsidiaries
Unaudited Consolidated Statement
of Financial Position Compiled for
the Years Ending 2016 & 2017

KENOSHA COUNTY HIGH IMPACT FUND

The Kenosha County High Impact Fund, administered by KABA, helps secure high quality economic development projects. Since its inception, the High Impact Fund has contributed to:

\$3.6 MM

in high impact
awards

9

companies/
developments

\$168 MM

in capital
investment

1,475

jobs

Unaudited Consolidated Statement
of Activities - All Funds, Compiled for
the Years Ending 2016 & 2017

	2017	2016
Assets		
Cash & Short Term Investments	\$13,159,502	\$13,609,623
Notes/Advances Receivable Less Reserves	\$10,013,449	\$10,709,005
Other Assets	\$2,435,722	\$3,350,230
Total Assets	\$25,608,673	\$27,668,858
Fixed Assets		
Property & Equipment Net of Accumulated Depreciation	\$11,080,700	\$5,879,482
Total Assets & Fixed Assets	\$36,689,373	\$33,548,340
Liabilities		
Accounts Payable & Other Short Term Liabilities	\$1,768,345	\$2,629,221
Notes Payable	\$6,381,677	\$1,235,420
Total Liabilities	\$8,150,022	\$3,864,641
Net Assets		
Unrestricted	\$10,941,927	\$10,988,094
Temporarily Restricted	\$17,597,424	\$18,695,605
Total Net Assets	\$28,539,351	\$29,683,699
Total Liabilities & Net Assets	\$36,689,373	\$33,548,340

	2017 Operating	2017 Loan Funds/Building	2016 Operating	2016 Loan Funds/Building
Revenues				
Contract Services	\$200,000	\$—	\$237,500	\$—
Membership Dues	\$306,057	\$—	\$298,705	\$—
Loan Service Fees	\$44,020	\$—	\$34,005	\$—
Training/CEO Roundtables Fees	\$95,511	\$—	\$85,788	\$—
Interest (Bank, Investment s & Notes)	\$1,003	\$475,725	\$535	\$448,358
Revolving Loan Fund Administration	\$562,958	\$—	\$556,364	\$—
Other	\$218,865	\$198,946	\$160,281	\$923,635
Total Revenue	\$1,428,414	\$674,671	\$1,373,178	\$1,371,993
Expenses				
Personnel Costs	\$944,738	\$—	\$895,725	\$—
Revolving Loan Fund Administration	\$—	\$562,958	\$—	\$556,364
Travel / General Admin /Training / CEO Roundtable	\$92,803	\$—	\$81,830	\$—
Office Equipment	\$3,562	\$—	\$2,225	\$—
Mailing/Printing / Office Supplies	\$10,517	\$12,330	\$11,324	\$955
Accounting / Auditing / Legal	\$24,602	\$14,027	\$30,778	\$16,375
Insurance (Business & General Liability)	\$13,959	\$5,000	\$9,305	\$4,744
Telecommunications / Computer Services	\$26,223	\$1,262	\$25,093	\$942
Rent / Space Maintenance / Utilities	\$91,000	\$28,850	\$90,857	\$28,236
Membership & Business Development	\$175,447	\$—	\$190,374	\$—
Depreciation & Property Taxes	\$31,082	\$69,383	\$26,702	\$68,993
Miscellaneous Expense	\$—	\$47,144	\$—	\$54,328
Reserve Adjustment	\$—	\$1,090,000	\$—	\$827,000
Total Expenses	\$1,413,933	\$1,830,954	\$1,364,213	\$1,557,937
Change In Net Assets	\$14,481	\$(1,156,283)	\$8,965	\$(185,944)

2017 KABA MEMBERSHIP LISTING



351

total number of
KABA investors



35

number of new
investors in 2017



21%

percentage of investors in
manufacturing - the largest
industry concentration



59%

percentage of investors
with less than 49
employees

BANKING

Advia Credit Union
Blackhawk Community
Credit Union
BMO Harris Bank
Capital One
Chase
CIBC Bank

Community State Bank
Educators Credit Union
First American Bank
First Business Bank- Kenosha
Johnson Bank
MB Financial Bank
PNC Bank

Southern Lakes Credit Union
State Bank of the Lakes
The Huntington National Bank
Tri City National Bank
TruStone Financial Federal
Credit Union
US Bank

BUSINESS SERVICES

A.S.G. Staffing, Inc.
Alarm Detection System Inc.
Atlas Employment
Services, Inc.
Badger Press
Photographics, Inc.
Catalyst Exhibits, Inc.
CCB Technology
Chef David's Catered Events
Computer Technologies, Inc.
Converting Solutions, Inc.
Dooley & Associates, LLC
Equity Creative
Hallum Enterprises, Inc.

Halpin Personnel
HR Value Partners
Kenosha Grounds Care
Lee Hecht Harrison
Leeward Business Advisors
Leitch Printing Corporation
Len laquinta's Excellence in
Communications, Inc.
Living As A Leader
Martin Group
Mueller Communications, LLC
NSR Business Solutions
Offsite, LLC
OFS Brands

Over The Top Cuisine
Parallel Employment Group
Platinum Systems, Inc.
Professional Services Group, Inc.
Rick L Perrine Property
Maintenance, LLC
TempsNow Employment &
Placement Services LLC
The Colergét Conference
Center
WHR Group
Winter Services LLC

CONSTRUCTION & RELATED INDUSTRIES

Bane-Nelson, Inc.
Berghammer Construction
Corporation
Bukacek Construction
C.G. Schmidt, Inc.
Cicchini Asphalt, LLC
Concrete Specialties
Company - Kenosha
Dickow-Cyzak Tile Company
DORAL Corporation
Electrical Contractors of
Wisconsin, Inc.

Flannery Fire Protection, Inc.
Hunzinger Construction Co.
Keller, Inc.
Kenosha Plumbing
Kitchen Cubes
Lee Plumbing Mechanical
Contractors, Inc.
Liftpro, LLC
Martin Petersen Co, Inc.
MSI General Corporation
Next Electric Inc.
Point Ready Mix

Postorino Decorating, Inc.
Rasch Construction &
Engineering, Inc.
Riley Construction Co., Inc.
SERVPRO of North Kenosha
County
Thompson Project
Management, LLC
Valiant Electric Inc.
Witico Development Corp.
Yutka Fence

ENGINEERING & ARCHITECTURAL SERVICES

Clark Dietz, Inc.
Deigan & Associates, LLC
DLH Consulting Services, LLC
Garland Alliance, Inc.
Harwood Engineering
Consultants

JSD Professional Services, Inc.
K. Singh & Associates, Inc.
Kueny Architects, LLC
Partners in Design
Architects, Inc.

Pinnacle Engineering Group
raSmith
Ruekert Mielke

GOVERNMENT & EDUCATION

Carthage College
Central High School District
of Westosha
City of Kenosha
Concordia University Wisconsin
Gateway Technical College
Herzing University
Kenosha County
Kenosha Unified School District

St. Joseph Catholic Academy
State of Wisconsin - Dept. of
Workforce Development
The Prairie School
Town of Paris
Town of Somers
Town of Wheatland
University of Wisconsin -
Parkside

Village of Bristol
Village of Paddock Lake
Village of Pleasant Prairie
Village of Salem Lakes
Village of Twin Lakes
Wilmot Union High School
District

HEALTH CARE & RELATED INDUSTRIES

Abbott
Advanced Pain Management
Aurora Health Care
Business Health Care Group
Comprehensive
Orthopaedics, S.C.
Daniel R. Santarelli DDS
Dental Associates, Ltd.,
Kenosha
Doctors of Physical Therapy
Frantal Dental Care

Froedtert South
Frontida, Inc.
Fulmer Dentistry
Hospice Alliance
Jeanne S. Vedder, M.D.
Kenosha Area Family and
Aging Services, Inc.
Kenosha Community Health
Center, Inc.
Kenosha Radiology Center

Kenosha Visiting Nurse
Association & Affiliates
LivingWell Home Medical
Supplies, Inc.
OccuCare
Regulatory Compliance
Associates Inc.
Sports Physical Therapists
VaxPro LLC
Wisconsin Specialty Surgery
Center

INDIVIDUAL

Susan Crane
Jerold Franke
Ronald Frederick
David Geertsens

Carl Holborn
Representative Samantha
Kerkman
County Executive Jim Kreuser

Michael Montemurro
Karl Ostby
Clifton Peterson

2017 KABA MEMBERSHIP LIST

INSURANCE, LEGAL & FINANCIAL SERVICES

A.B. Schmitz Agency, Inc.
Alia, DuMez & McTernan, S.C.
Ameriprise Financial Services, Inc.
Andrea & Orendorff, LLP
BDO
CliftonLarsonAllen LLP
David Insurance Agency
Davison Law Office, Ltd.
Deiningner & Co., Inc.
Dewitt, Ross & Stevens, S.C.
Ehlers and Associates, Inc.
Financial Service Group, Inc.
Gateway Mortgage Corp.
Godfrey & Kahn S.C.

Godin Geraghty Puntillo Camilli, SC
Guttormsen & Hartley, LLP
Jacsten
Lindner & Marsack, S.C.
Lueder Financial Group - Northwestern Mutual
Madrigano, Aiello & Santarelli, LLC
Michael Best & Friedrich LLP
Promontory Point Partners, LLC
Prophet Wealth Management
RHR Management Consulting, LLC
Rizzo & Diersen, S.C.

Sam Ruffolo Agency
Scott Olson, CPA, LLC
Seymour & Associates, S.C.
Specialized Accounting Services LLC
Thomey Financial Services & Eighth Avenue Advisors
Tirabassi, Felland & Clark, LLC
Trottier Insurance Group
Valeri Agency, Inc.
Vrakas CPAs + Advisors
Walker & Dunlop
Wegner CPAs
Wells Fargo Advisors
Wipfli LLP

MANUFACTURING

Abatron, Inc.
ACCO Brands
Allied Plastics, Inc.
Ardent Mills LLC
Ariens Company
ASYST Technologies LLC
Badgerland Products, Inc.
Beckart Environmental, Inc.
BEI Electronics, LLC
Bio Fab Technologies, Inc.
Bone Dry Products
Bradshaw Medical Inc.
Colbert Packaging Corp.
Compass Minerals
Contact Rubber Corporation
Cordeck
Edible Cuts
Emco Chemical Distributors, Inc.
Engendren Corporation
Expanded Technologies Corp.
Fair Oaks Farms, LLC
Finishing & Plating Service, Inc.
Five Star Fabricating, Inc.
FNA Group Inc.
GEM Manufacturing Inc.
Good Foods Group, LLC

Hanna Cylinders, LLC
Honeywell/Genesis Cable Products
Industrial Toolz/Handi-Ramp
InSinkErator
International Mold and Production LLC
IRIS USA, Inc.
Jockey International, Inc.
Kenall
Kenosha Beef Int., Ltd.
Kenosha Lumber & Manufacturing Co., Inc.
Kirsan Engineering, Inc.
L & M Corrugated Container Corp.
Lakeside Steel & Mfg. Co.
LMI Packaging Solutions, Inc.
Medtorque, Inc.
Mikrotech, LLC
Monarch Plastics, Inc.
Mosmatic Corporation
Niagara Bottling, LLC
NitroSteel LLC
Ocean Spray Cranberries, Inc.
Ocenco, Inc.

Pacific Sands
Parker Plastics, Inc.
POP Manufacturing
Powerbrace Corporation
Process Pipe & Valve, Inc.
Puratos Corporation
Quest Products Inc.
R+D Custom Automation
RCK Foods
Reflective Concepts, Inc.
Rehrig Pacific Company
Rust-Oleum Corporation
S.C. Johnson & Son
Sanmina
Shiloh
SL Montevideo Technology, Inc.
Snap-on Incorporated
ST Specialty Foods
Standex
TG3 Electronics, Inc.
The Metal Shop
Toolamation, Inc.
ViskoTeepak
Vonco Products, LLC

Kenosha Achievement Center, Inc.
Kenosha Area Chamber of Commerce, Inc.

Kenosha Area Convention & Visitors Bureau
Kenosha Community Foundation

NON-PROFIT

Boys & Girls Club of Kenosha
Goodwill Industries of Southeastern Wisconsin, Inc.
Journey Church

NON-PROFIT, CONT.

Kenosha Country Club
Kenosha Symphony Orchestra
Kenosha YMCA
Lake County Partners
Lemon Street Gallery & Artspace

MRA
Southshore Realtors Association, Inc.
Twin Lakes Area Chamber & Business Assoc., Inc.

United Way of Kenosha County
Wisconsin Housing and Economic Development Authority (WHEDA)

REAL ESTATE

Bear Real Estate Group
Berkshire Hathaway Home Services - Epic Real Estate
Bridge Development Partners
CenterPoint Properties
Clovis Point, LLC
Darwin Realty & Development Corporation
First Industrial Realty Trust, Inc.
Garretto Real Estate LLC

Gorman & Company
Janko Group
Landmark Title Corporation
Lee & Associates of Illinois LLC
Legacy Property Management Services, LLC
NAI MLG Commercial
Newmark Knight Frank
Petretti Builders & Developers
Pitts Brothers & Associates LLC

Prime Realty Group of Wisconsin, LLC
RE/MAX Elite, Inc. - Mary Dixon
Re/Max Newport Elite
Southshore Title and Closing Services, LLC
Transwestern
Venture One Real Estate, LLC
WISPART LLC
Zilber Property Group

RETAIL ESTABLISHMENTS

Cast, LLC DBA Sazzy B
Chiappetta Shoes, Inc.
Crown Trophy & HTE Promotional
Festival Foods
Kenosha Kingfish Baseball Club
Kentucky Fried Chicken
LaMacchia Travel

Mike's Chicken & Donuts
Mitchell Carpets
Office Furniture Warehouse
Paielli's Bakery, Inc.
Pleasant Prairie Premium Outlets
Rustic Road Brewing Co.
Southport Marina

Tenuta's Delicatessen & Liquors, Inc.
The Club at Strawberry Creek
Total Furniture
Triangle Appliance, Video & Carpeting Inc.
Wilmot Mountain, Inc.

MEDIA, TELECOMMUNICATIONS & UTILITIES

Alliant Energy
ClearCom Inc
Kenosha News

McTernan Wireless/Mobile One
VTI Security

WEC Energy Group
Wisconsin Fuel & Heating

TRANSPORTATION, DISTRIBUTION & WAREHOUSING

Amazon
Arvato
Associated Wholesale Grocers
ATC Transportation LLC
C.H. Robinson Worldwide, Inc.
EJOT Fastening Systems LP
GFI Midwest LLC
Glacier State Distribution Services
Gordon Food Service

Heartland Produce Co.
Jelly Belly Candy Company
JHT Holdings, Inc.
Kem Krest
Mann Public Warehouse
Meijer
Merchants Moving & Storage Co.
Midwest Refrigerated Services
Otto Nelson Moving and Storage

Palmen Auto Group
Pepsi Beverages Company
Pfizer
SuperValu, Inc.
Uline, Inc.
Volkswagen Group of America, Inc.
Yamaha Motor Corp., USA

OUR VISION

*Kenosha County is the premier destination
for new investment and talent in the
Chicago-Milwaukee corridor.*



The Kenosha Area Business Alliance (KABA) is Kenosha County's economic development organization and business association.

A public-private partnership, KABA is focused on making the Kenosha Area a better place to do business, live, and work, through: (1) Economic development initiatives that stimulate private sector investment and job creation; (2) Providing programs, products, and services that improve the competitiveness of Kenosha Area employers and their employees; and (3) Educational initiatives aimed at enhancing student achievement and overall school performance.

5500 Sixth Avenue, Suite 200, Kenosha, WI 53140 | 262.605.1100 | info@kaba.org

www.kaba.org