



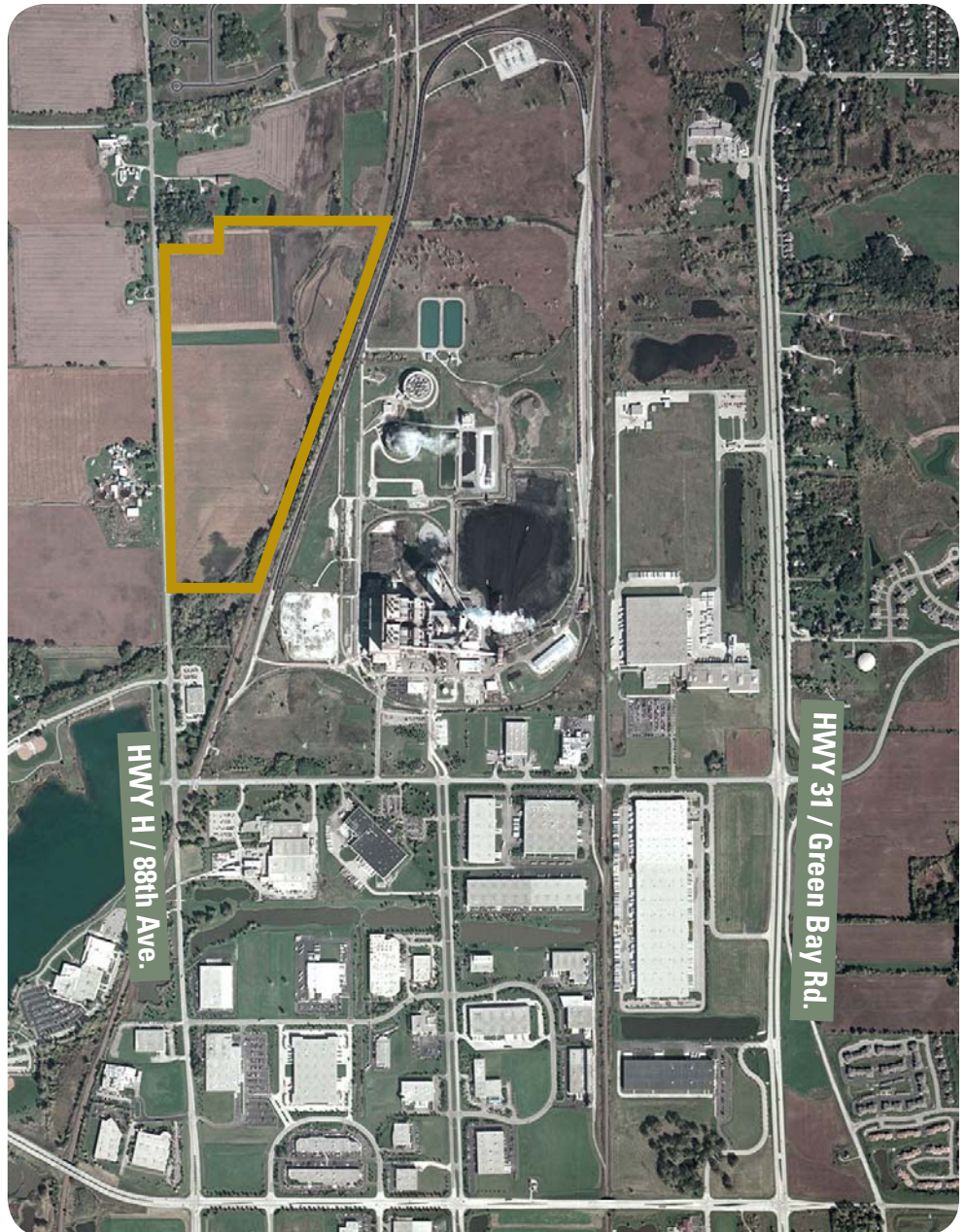
# Vacant Land for Sale 88 Acres



## Industrial / Distribution Use

### Pleasant Prairie, Wisconsin

- 88.3 acre development parcel ready for immediate development
- Located in the prestigious LakeView Corporate Park
- Zoned M-2 Heavy Manufacturing allowing maximum flexibility
- One of the few large sites remaining in the Southeast WI/Lake County, IL submarket
- Parcel can accommodate development in excess of 1.0 million square feet
- Municipal sewer and water available – water service is oversized to accommodate large water users
- Close proximity to Interstate 94 and centrally located between Milwaukee and Chicago



For more information contact

[www.wispark.com](http://www.wispark.com)

Todd Rizzo  
trizzo@wispark.com  
414-274-4600

*Information shown herein is deemed reliable and is believed to be accurate, however, no warranty or representation is made as to the accuracy thereof and is subject to correction.*